

# **Atlantic Salmon Smolt Estimate Report 2022**

*Prepared by:*

Lyndsay Jay-Keating

Biologist

Miramichi Salmon Association

May 2023

*Funding provided in part by:*

The Atlantic Salmon Conservation Foundation

## Introduction

Declining Atlantic salmon (*Salmo salar*) runs in the Miramichi River during the 1970s and early 1980s marked the beginning of increased conservation efforts for this species. Action plans were developed and implemented, including the closure of the commercial fishery and the mandatory release of all large salmon by anglers. From 1984 – 1992 the stocks rebounded and numbers were on the rise. After 1992, however, stocks began declining again and have continued to do so over the last three decades. In recent years, the Southwest Miramichi River (SW) has outperformed the Northwest Miramichi River (NW) for adult returns. From 1998 – 2014, the Northwest River system only reached conservation requirements of returning adult salmon in two separate years, whereas the Southwest River system met requirements in seven of those years. Average conservation requirements for returning adults were met 103% of the time on the Southwest branch and 51% of the time on the Northwest branch between 1998 and 2014. In 2015, the Department of Fisheries and Oceans (DFO) developed the Limit Reference Point (LRP), which is one of the three components that make up a decision-making framework for fisheries known as the Precautionary Approach (PA). They defined the LRP as "the stock level below which productivity is sufficiently impaired to cause serious harm" (DFO, 2009), and it is measured in the number of eggs per meter squared ( $m^2$ ) of fluvial wetted area. For the Southwest Miramichi River system, the LRP is 1.52 eggs/ $m^2$ ; for the Northwest Miramichi River system, it is 1.76 eggs/ $m^2$  (DFO, 2018). The lowest recorded number of adult returns on both the Northwest and Southwest Miramichi Rivers occurred in 2019, with the estimated egg deposition being well below the LRP for both branches; SW LRP was 64% and NW LRP was 29% (DFO, 2020).

Electrofishing results from the Miramichi River's Northwest and Southwest branches have typically shown healthy numbers of salmon fry and parr in the past. Currently, smolt production appears stable, but adult returns are not reflective of the relatively healthy juvenile production observed (DFO, 2021; DFO, 2022). In 2011, angling regulations on the Northwest Miramichi River were modified to a catch and release fishery only to reduce human harvesting mortality on grilse, and in 2015, all New Brunswick rivers became mandatory catch and release fisheries of all Atlantic salmon due to the continual decline in stocks (DFO, 2019). The Northwest Miramichi River is also the confirmed site of a striped bass spawning ground, where striped bass spawning coincides with salmon smolt migration to the ocean. This overlap could impact salmon smolt mortality through predation by striped bass. Striped bass are also present in the Southwest Miramichi River but not in highly concentrated numbers like the spawning observed in the Northwest River.

Smolt population estimates have been conducted on the Northwest and Southwest branches of the Miramichi River system separately and on the entire river system. The Miramichi Salmon Association (MSA) conducted ten years of estimates on the Dungarvon River, a tributary of the

Renous River, on the Southwest branch (2001 - 2010), three years on the Northwest branch (2011 - 2013), and two years on the entire river system (2014 - 2015). Smolt estimates were not completed from 2016 - 2018 as the MSA focused conservation efforts toward the Collaboration for Atlantic Salmon Tomorrow (CAST) program. The smolt estimate program returned in 2019 and 2020 on the Northwest and Little Southwest Miramichi Rivers when the MSA, and other like-minded conservation groups, were concerned about the increasing striped bass population, the decreasing number of returning adult salmon, and the ongoing impacts of climate change. The focus was initially planned for the Northwest branch, with plans to expand to the Southwest branch in the future. The smolt estimate program then continued in 2021 and 2022 on the Northwest and Dungarvon Rivers.

An accurate estimate of the total smolt population migrating out of the Northwest and Southwest branches of the Miramichi River to the ocean is a crucial component to understanding and managing Atlantic salmon in this area. This study aimed to assess smolt production on the Northwest Miramichi River and the Dungarvon River (Figure 1) to determine if adequate juvenile production was occurring. Ocean survival rates of smolts could then be observed in subsequent years as adults return as grilse and multi-sea-winter salmon and could help guide management decisions to conserve this critical population of salmon.

## **Methods**

### ***Study Area***

The Northwest Miramichi watershed drainage area makes up approximately one-third of the total watershed of the Miramichi River. The Northwest Miramichi basin includes two major river systems: the Little Southwest River (1,345km<sup>2</sup>) and the Northwest Miramichi River (2,138km<sup>2</sup>), which merge into a delta at the head of tide. The Northwest Miramichi River also includes a large tributary, the Sevogle River (DFO, 2018).

The Southwest Miramichi watershed drainage area makes up approximately two-thirds of the total watershed of the Miramichi River. The Southwest Miramichi basin includes two main river systems: the Southwest Miramichi River (5,840km<sup>2</sup>) and the Renous River (1,429km<sup>2</sup>) (DFO, 2018).

### ***Design***

Smolt populations in the Northwest branch of the Miramichi River and the Dungarvon River were assessed using a mark-recapture program, with population estimates calculated through corrected Petersen and Bayesian methods. Three rotary screw traps, or smolt wheels, were installed in early May 2022 when water levels were accessible and the water warmed to 4-5°C. Two wheels were installed on the Northwest River at the Wayerton Bridge (47.134943°,

-65.832723°) and one wheel in a new location on the Dungarvon River (46.816370°, -65.902174°). The wheels were held in place by a large overhead cable that spanned the river's width. A second cable was connected from the overhead line to the wheel. Two pontoons kept each wheel partially afloat and allowed the central trap to rotate fully (the current forces the trap to turn) without hitting the bottom of the river.

Fish entering the wheel were funnelled through the rotating trap into a live box at the back of the wheel. The rotating trap prevented any fish from escaping the box. All fish caught in the live box were collected and sorted. Each species was identified, counted, and released except for Atlantic salmon smolt, which also had fork length recorded and scale samples taken. Fork lengths (mm) were measured on a maximum of 25 smolts per day and scale samples were taken from 2 of these 25. The 23 smolts not scale sampled were individually tagged with a small, numbered streamer tag. Any remaining unmeasured smolts, up to a maximum of 100 per day, were also tagged. After 100 smolts were tagged, all remaining smolts in the box were counted and released untagged. A maximum of 10 scale samples were taken each day and each sampled fish was released back into the water with no streamer tag. For the purpose of this study, all juvenile Atlantic salmon greater than 100 mm (FL) were considered smolt. All tagged fish were placed in buckets (maximum of 25 fish per bucket) and then transported, in an oxygenated tank on the back of a truck, approximately 5 km upstream for release. The number of tagged smolts recaptured at the smolt wheel allowed us to estimate the number of smolts migrating out of that tributary.

### ***Permits***

Scientific Collection Permits from the Department of Fisheries and Oceans (SG-RHQ-22-027 and SG-RHQ-22-020) were obtained prior to starting this project.

### **Results**

The Northwest smolt wheels operated from May 3<sup>rd</sup> to May 28<sup>th</sup>, 2022. A total of 1,673 smolts were tagged on the Northwest River and 147 smolts were recaptured. The peak of the smolt run occurred on May 14<sup>th</sup>, with a combined total of 1,069 smolts captured (Figure 2). Due to lowering water levels, both wheels were readjusted as needed to achieve proper rotations per minute (RPM) and ensure safety protocols were met.

A total of 2,039 smolts were captured through Wheel 1 at Wayerton and 48 smolts were recaptured. A total of 3,767 smolts were captured and 99 smolts were recaptured through Wheel 2.

Applying a 10% mortality rate to our population estimate (using the Bayesian method), it was estimated that 42,300 (95% CI 36,200 – 49,800) smolts migrated from the Northwest River in

the spring of 2022 (Figure 3). A similar estimate was obtained through the Corrected Peterson method. Overall, we estimated 0.51 smolts/100m<sup>2</sup>.

The smolt wheel on the Dungarvon River operated from May 9<sup>th</sup> - May 28<sup>th</sup>, 2022. A total of 1,266 Atlantic salmon smolts were captured. Among the captured smolts, 300 were transported to the Miramichi Salmon Conservation Centre, 601 were tagged with a streamer tag and released upstream, and 55 of those fish were recaptured in the smolt wheel. The peak of the smolt run occurred on May 19<sup>th</sup>, with 276 smolts captured (Figure 2).

Applying a 10% mortality rate to our population estimate (using the Bayesian method), it was estimated that 7,225 (95% CI 5,650 – 9,475) smolts migrated from the Dungarvon River in the spring of 2022 (Figure 4). Similar results were obtained through the Corrected Peterson method. Overall, the estimate equated to 0.32 smolts/100m<sup>2</sup>.

## **Discussion**

600,000 smolts are needed annually from the total Northwest River system to maintain population targets. The Wayerton location along the Northwest represents only one of three major tributaries within the Northwest River system. The estimate of 42,300 smolts was very low when compared to the required population targets of that tributary. However, having a tight confidence interval of 36,200 – 49,800 smolts, with a range of only 13,600 smolts, only a leads to a normally distributed estimate.

The Dungarvon River estimate of 7,225 smolts was low compared to the Northwest estimate but is justifiable for the size of the river. Having a tight confidence interval of 5,650 – 9,475 smolts, with a range of only 3,825 smolts, leads to a normally distributed estimate.

Smolt estimates are a key component of understanding and managing Atlantic salmon populations. With the steady decline in returning adult salmon numbers in the Miramichi River, smolt migration numbers can help conservation groups and management/policy administrators determine where our conservation efforts can be best focused. By knowing the smolt numbers migrating out of the Miramichi River system and comparing that figure to adult returns, the at-sea mortality portion of the salmon life cycle can be better quantified, especially in tandem with smolt and kelt tracking programs that MSA participates in with the Atlantic Salmon Federation (ASF). Returning to conduct an annual smolt estimate on the Northwest Miramichi River in 2022 was important to fill the data collection gap that had been missing for several years.

## **Acknowledgements**

The Miramichi Salmon Association acknowledges the financial contributions of Canada Summer Jobs (CSJ), Student Employment Experience Development (SEED), and the Atlantic Salmon Conservation Foundation (ASCF). The MSA also acknowledges the North Shore District Micmac Council and the Atlantic Salmon Federation for their support in this project, as well as contributing field personnel to assist in the installation and fishing of the smolt wheels.

## **References**

DFO. 2009. A Fishery Decision-Making Framework Incorporating the Precautionary Approach. DFO Can.

DFO. 2018. Limit Reference Points for Atlantic Salmon Rivers in DFO Gulf Region. DFO Can. Sci. Advis. Sec. Sci. Resp. 2018/015.

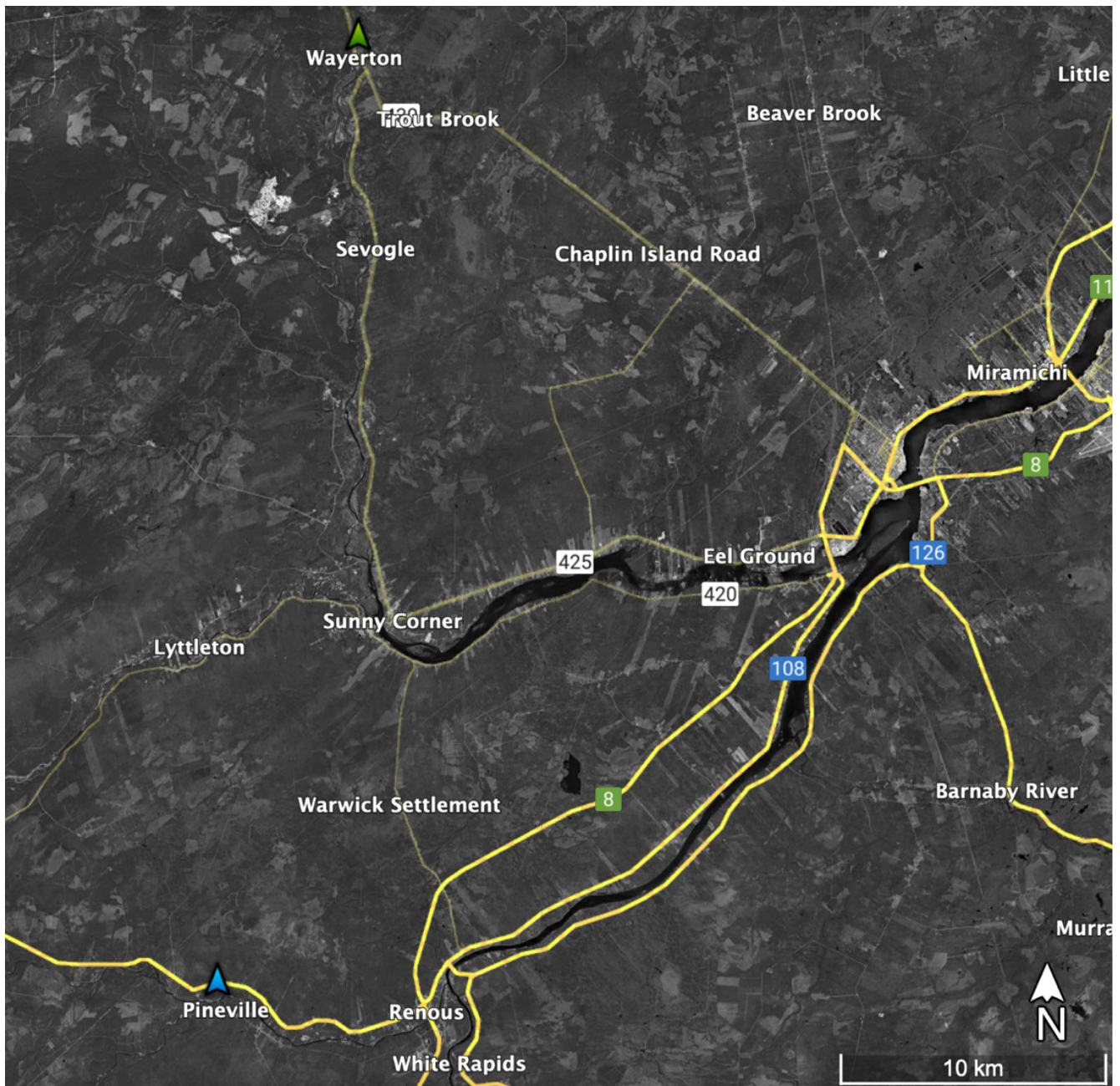
DFO. 2019. Update of indicators of Atlantic Salmon (*Salmo salar*) in DFO Gulf Region Salmon Fishing Areas 15 - 18 for 2018. DFO Can. Sci. Advis. Sec. Sci. Resp. 2019/021.

DFO. 2020. Update of indicators to 2019 of adult Atlantic Salmon for the Miramichi River (NB), Salmon Fishing Area 16, DFO Gulf Region. DFO Can. Sci. Advis. Sec. Sci. Resp. 2020/010.

DFO. 2021. Count of Atlantic Salmon- Cumulative Counts (Canada, Government of Canada, Fisheries and Oceans, Gulf Region). Canada: Government of Canada. Retrieved 2021, from <https://inter-j01.dfo-mpo.gc.ca/asir/report/count>.

DFO. 2022. Update of indicators of Atlantic Salmon (*Salmo salar*) in DFO Gulf Region Salmon Fishing Areas 15 - 18 for 2020 and 2021. DFO Can. Sci. Advis. Sec. Sci. Resp. 2022/021

## Appendix



*Figure 1.* Locations of the three smolt wheels operating in 2022. One wheel at the Dungarvon River location (blue arrow) and two wheels at the Northwest River location (green arrow).

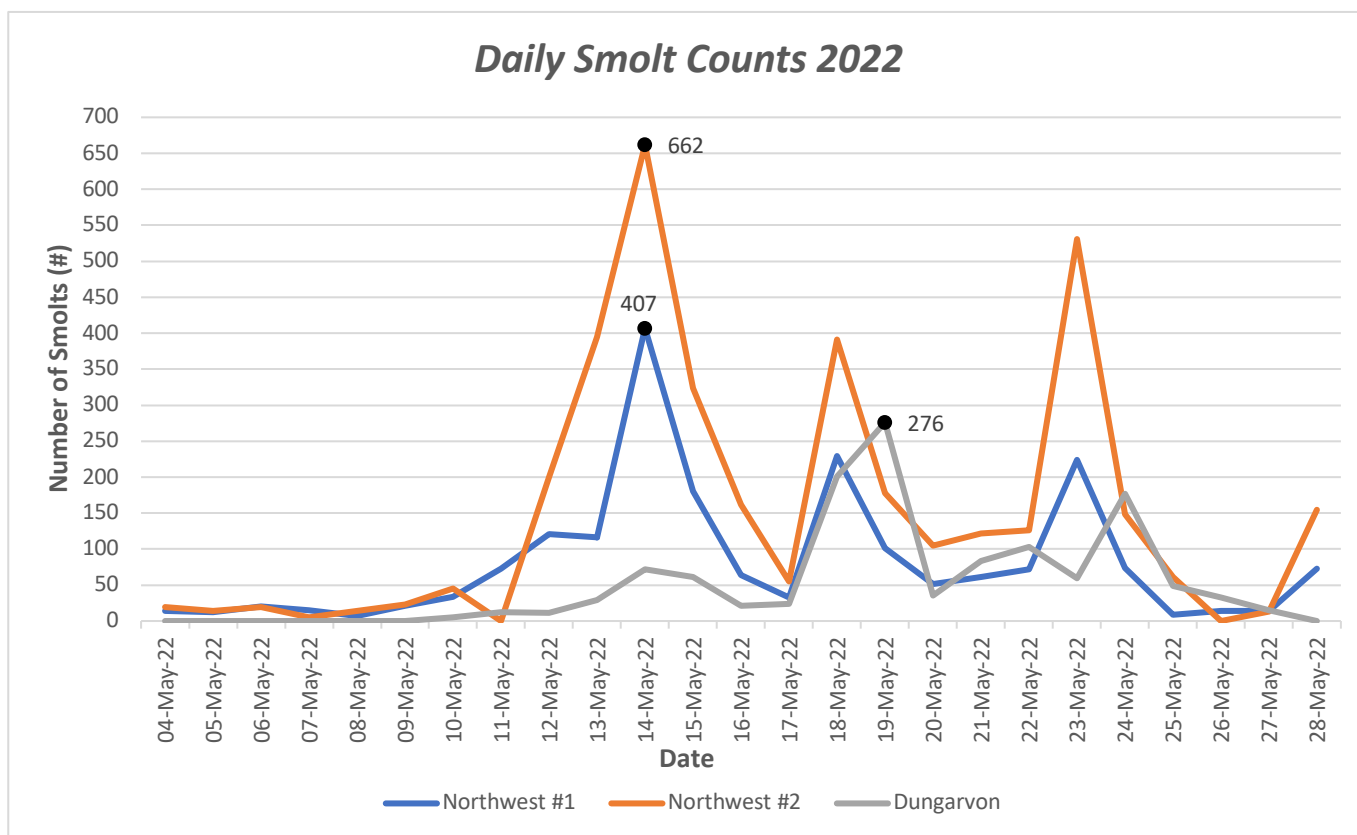
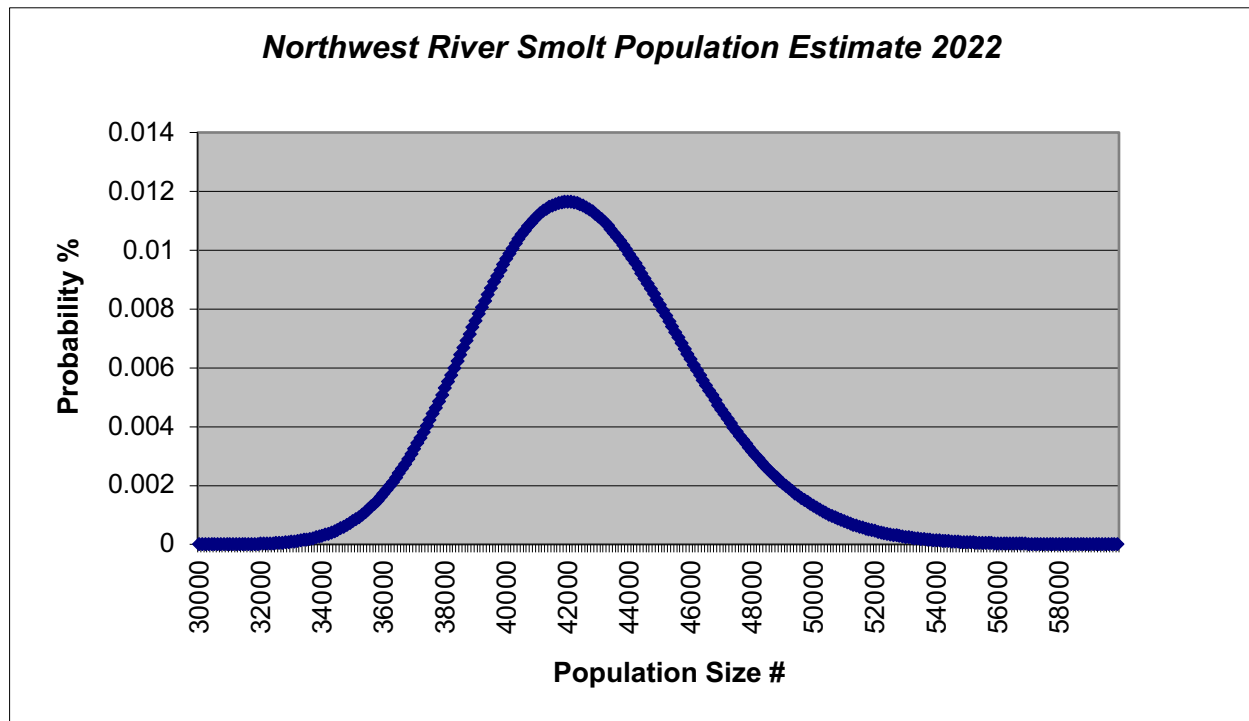
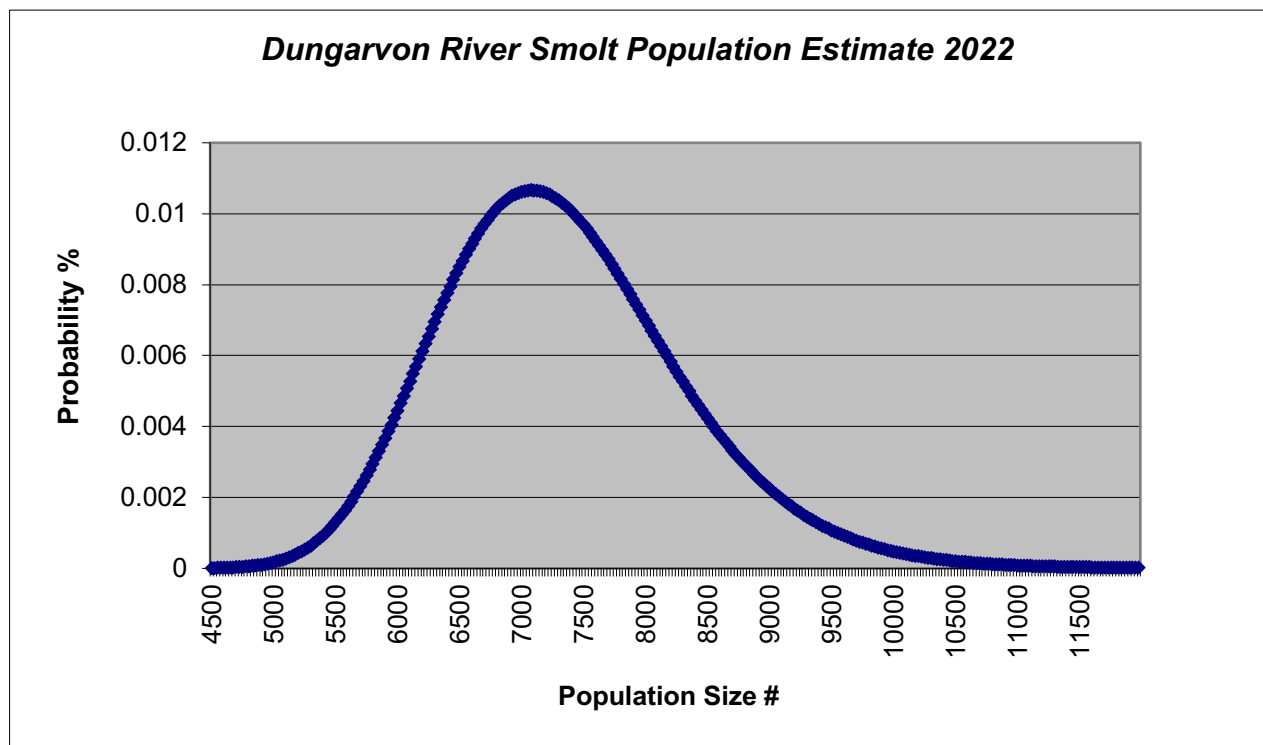


Figure 2. Daily smolt counts at the three wheels operated during May 2022. Peak numbers (black dots) occurred on the Northwest on May 14<sup>th</sup> and on the Dungarvon on May 19<sup>th</sup>.





*Figure 3.* Smolt population estimate for the Northwest River during May 2022. A 10% mortality rate was applied (using the Bayesian method) creating a population estimate of 42,300 (95% CI 36,200 – 49,800) smolts.



*Figure 4.* Smolt population estimate for the Dungarvon River during May 2022. A 10% mortality rate was applied (using the Bayesian method) creating a population estimate of 7,225 (95% CI 5,650 – 9,475) smolts.