

ANNUAL REPORT 2025



MIRAMICHI SALMON
ASSOCIATION INC.

MSA
CONSERVATION





MSA Chair Richard McGuigan and supporter Jay Sprague releasing Atlantic salmon fry.

Introduction

- 02 Message from the MSA Chair
- 03 Message from the MSA US Chair
- 04 President's Report

Conservation

- 05 Field Programs
- 10 Hatchery Operations

Advocacy

- 12 River Management
- 13 Education
- 15 Communications

Fundraising

- 16 Events
- 17 Campaigns

Finances

- 18 Financial Update

Supporters

- 19 Staff
- 19 Executive
- 19 Board of Directors
- 20 Life Members
- 23 Annual Members
- 24 Partners

Our MSA staff is committed to maintaining accurate records and reporting data. Please contact our office if you find any discrepancies in our 2025 Annual Report or have comments or questions.

FOREWORD

The Miramichi Salmon Association (MSA) 2025 Annual Report highlights our work over the last year. Enclosed are summaries outlining our 2025 fieldwork, hatchery operations, events, communication projects, and financial activities. Thank you for taking the time to review this document. We hope you will help us continue our fight to conserve Atlantic salmon on the Miramichi River.

MESSAGE FROM THE MSA CHAIR

As I reflect on 2025, I do so with cautious optimism. The challenges facing Atlantic salmon on the Miramichi remain serious, but the dedication of our staff, volunteers, partners, and supporters continues to provide a strong foundation for progress.

I would like to begin by recognizing the outstanding work of our staff. Their commitment to conservation, science, advocacy, and daily operations is central to the success of the Miramichi Salmon Association. From managing hatchery operations and field programs to supporting fundraising and partnerships, their efforts are vital to our mission.

The hatchery continues to place a significant financial burden on our organization, and this is not taken lightly by the Board. At the same time, we recognize that a well-managed hatchery and stocking program is critical to any credible effort to restore healthy salmon populations. With natural survival under extreme pressure, the hatchery remains one of the most important conservation tools available to us.

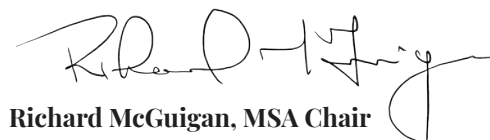
A key achievement this year was the successful submission of a comprehensive stocking plan to the Department of Fisheries and Oceans Canada. This plan was the result of extensive work by Mark Hambrook and the Hatchery Sub-Committee, with scientific support from Dr. Tommi Linnansaari of the University of New Brunswick. Building on last year's submission, the revised plan addressed DFO's concerns and introduced innovative approaches, including the release of larger, year-delayed male smolts to improve estuary survival, and the targeted release of predominantly adult females to spawn with wild males. These measures reflect our commitment to adaptive, science-based management.

We continue to enjoy strong, collaborative relationships with First Nations and with conservation partners such as the Atlantic Salmon Federation, the Miramichi Watershed Management Committee, and the New Brunswick Salmon Council. Our partners at MSA US also remain a critical source of financial support and guidance, particularly in relation to hatchery operations.

I am grateful for the steadfast commitment of our Board of Directors, whose dedication ensures strong governance during a challenging period for salmon conservation.

Significant concerns remain. DFO has yet to provide meaningful assistance in mitigating the impacts of the oversized striped bass population on migrating smolt. While the 2025 fishing season showed an increase in grilse returns, multi-sea-winter salmon remained scarce. This modest improvement offers some encouragement, but recovery is far from assured.

The Miramichi Salmon Association remains committed to responsible stewardship, constructive advocacy, and collaboration. With continued dedication and support, we will persist in our efforts to restore healthy, resilient salmon populations to the Miramichi.



Richard McGuigan, MSA Chair

MESSAGE FROM THE MSA US CHAIR

The 2025 salmon fishery on the Miramichi received a little boost from better than anticipated numbers of returning grilse. Clearly, things were better for salmon survival in the ocean last winter. While the grilse numbers were just a fraction of the runs we experienced prior to the striped bass problems, it did give us hope that the salmon population and fishery can hang on while we attempt to convince DFO to change its ways. The improved grilse numbers may be an indication that we will see more 2yr multi-sea-winter maiden spawners in the rivers than we have in the last few years. I sure hope so. The days are already getting longer, and we won't have all that long before we find out.

I fished the SW Miramichi very hard in late June and early July, and then again from early September to the end of the season. Water conditions were low this year, extremely low in the fall. Nonetheless we contacted salmon virtually every day on the river, and I can honestly say that I still enjoy my time on the Miramichi and Cains Rivers as much as ever. The Miramichi system is an accessible, near-wilderness setting, with generally good wading, moderate flows, a long season, and the presence of some very large salmon. The sum amounts to an impossible destination to beat.



Brad Burns, MSA US Chair



Atlantic salmon eggs incubating in combi tanks

MISSION

For over seventy years, the MSA and its members have directed their capabilities and funds to protect the entire Miramichi River system. Our mission is exemplary, river-based leadership, stewardship, and conservation practices for the Miramichi Watershed to continuously preserve and balance its environmental integrity for the benefit of all native species, particularly the Atlantic salmon.

PRESIDENT'S UPDATE

As we reflect on 2025, I am pleased to report that it was a strong and encouraging year for the Miramichi Salmon Association. At a time when Atlantic salmon continue to face unprecedented challenges, the commitment shown by our members, donors, partners, and volunteers has never been more important—or more evident.

One of the most positive signs this year was the exceptional attendance and support at our fundraising events. Our dinners, auctions, and community gatherings were well attended and demonstrated, once again, the deep connection people feel to the Miramichi River and its salmon. These events not only provide critical financial support for our conservation work, but they also reaffirm that our mission resonates strongly with the broader community. We are deeply grateful to everyone who contributed their time, resources, and enthusiasm.

The strength of MSA lies in its people, and 2025 highlighted just how fortunate we are to have a dedicated and capable team. Our staff continue to deliver high-quality programs across conservation, education, advocacy, and operations. From the long-standing work at our hatchery, to barrier operations, youth engagement, and collaboration with government and partner organizations, the professionalism and passion of the MSA team is evident in everything we do. I would also like to thank our Board of Directors for their steady leadership and thoughtful governance throughout the year.

There were many highlights in 2025, including continued success at the hatchery, strong partnerships with conservation allies, meaningful progress on education and outreach initiatives, and solid financial management that allows MSA to remain focused on its core mission. While the status of Atlantic salmon remains a serious concern, MSA continues to play a vital role in protecting, restoring, and advocating for this iconic species and the river it depends on.

On behalf of the Board and staff, thank you for your ongoing support of the Miramichi Salmon Association. Your commitment ensures that we can continue this important work today and into the future.



William (Butch) Dalton, MSA President



MSA staff fishing the smolt wheel on the Dungarvon River.

FIELD PROGRAMS

Smolt Estimates

During the spring smolt run, the Miramichi Salmon Association conducts smolt population estimates on various locations on the Miramichi River. This valuable data helps conservation groups and regulators make informed decisions about managing the Miramichi watershed. Our annual smolt estimate is conducted using a mark-recapture system.

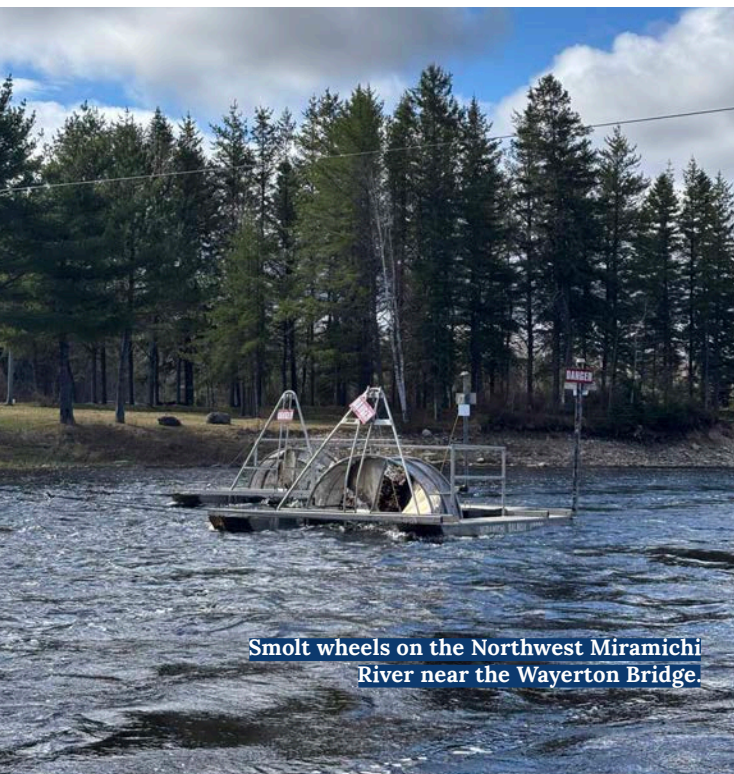
In 2025 the MSA assembled three rotary screw traps on the Northwest Miramichi River and one on the Dungarvon River.

Applying a 10% mortality rate to our population estimate (using the Bayesian method), it was estimated that 31,700 (95% CI 26,390 - 39,350) smolts migrated from the Northwest River in the spring of 2025. To compare, the 2024 smolt estimate on the Northwest Miramichi was 15,150 (95% CI 12,500 - 19,100).

It was estimated that 600 (95% CI 350 - 14,100) smolts migrated from the Dungarvon River in 2025. There is no comparison for the 2024 Dungarvon estimate since the collection of fry for an experimental stocking program was prioritized, and the remaining smolts from 2024 were insufficient to produce a meaningful estimate.



MSA Biologist Lyndsay Jay-Keating with summer students Kayla Russell (Anqotum) and Ally Taylor (MSA) conducting smolt counts.



Smolt wheels on the Northwest Miramichi River near the Wayerton Bridge.



MSA summer students Jack Riley and Cole Johnson fishing a smolt wheel.

Fry Stocking

In the month of June, the MSA successfully released over 430,000 salmon fry into the Dungarvon River as part of our ongoing experimental fry stocking program, which is designed to enhance salmon populations.

We additionally stocked over 170,000 salmon fry into the Southwest Miramichi River through our innovative Smolt-to-Adult (SAS) program. This comprehensive process entails the collection of smolts from their natural habitats, nurturing them to adulthood at the Miramichi Salmon Conservation Centre, facilitating their spawning, and subsequently releasing the fry back into their natal waters.

Given the declining numbers of adult salmon returning to the river system, the collection of smolts to develop into mature broodstock is essential for ensuring the sustainability of supplemental fry stocking efforts on the Miramichi River.



Atlantic salmon fry being released.



MSA summer student Ally Taylor unloading fry buckets for stocking.

Cold Water Restoration

The MSA and other conservation organizations are dedicated to improving and reviving cold water habitats, which plays a crucial role in providing salmon habitat, especially during warm water periods.

Since 2014 the MSA has spearheaded projects to restore cold water at 12 distinct locations along the Miramichi River. Annual revisits of previously restored cold water habitat sites are conducted by the MSA field team to evaluate their functionality and perform necessary maintenance. Overgrowth and debris removal is conducted along with the monitoring of temperatures.

The temperature variances between the cold water pools and the main river were substantial, ranging from 3.2°C to 10.2°C. Fish were observed at all 12 sites, and snorkel surveys were conducted at Government Pool, Indiantown Brook, Burntland Brook, Black Brook, and Rocky Brook.

In 2025 the MSA completed a novel cold water restoration project in partnership with Dr. Antóin O’Sullivan, O’Sullivan EcoHydraulics. This project involved selecting sites where restoration would be most impactful for Atlantic salmon.

The Canada Nature Fund for Aquatic Species at Risk has primarily funded this project with in-kind support from the University of New Brunswick.

Salmon Protection Barriers

In 2025, the MSA continued to manage the salmon protection barriers on the Northwest Miramichi and Dungarvon Rivers.

Collaboration with the NB Department of Natural Resources and Energy Development remains ongoing to uphold the functionality of the barriers, which safeguard adult salmon during their journey upriver for spawning. The information gathered from the barriers is shared with the government and the public.

We extend our gratitude to Edward Stewart, the foreman, and his teams for their unwavering commitment and hard work ensuring the successful operation each summer.



MSA summer students Lauren Comeau, Payton Schenkels, and Maggie Clark performing maintenance work on a cold water pool.

Cold Water Pool Restoration

Restoration Site	Year
Donnelly Brook	2014
Doak Brook	2015
Indiantown Brook	2015
Otter Brook	2015
Pat's Brook	2015
Parks Brook	2016
Hudson Brook	2017
Salmon Brook	2017
Burntland Brook	2018
Government Pool	2019
Black Brook	2022
Rocky Brook	2025

Broodstock Collection and Spawning

Collecting broodstock for traditional fry stocking has become more difficult in the last few years and as such, MSA has moved away from fry stocking enhancement efforts via this method.

Our focus recently has been a Smolt-to-Adult (SAS) supplementation program on the Southwest Miramichi River, where wild smolts are collected and raised to maturity at the MSCC, spawned, and their fry released into natal waters as a supplementation program.

We had help from several groups this year for spawning, which is a labour-intensive and time-consuming process, so our heartfelt thanks to UNB/CRI, Anqotum, and the GKWA for volunteering their time and staff to ensure this important project continues to be successful.

We continued our partnership with Pabineau First Nations, assisting them with egg and fry incubation, after which they return their fry to the Nepisiguit River.

Juvenile Assessment

To analyze the distribution of juvenile Atlantic salmon the MSA conducts an electrofishing initiative in the Miramichi River. This program aims to identify potential stocking locations and assess the effectiveness of fry stocking and beaver dam management. This summer, despite less than favourable conditions due to wildfires and higher than average temperatures, MSA Biologist Lyndsay Jay-Keating and her team collected presence-absence data from 44 priority sites.

Additionally, the MSA assisted the Department of Fisheries and Oceans Science Branch in their electrofishing program during September. These surveys are conducted by DFO to monitor sites as part of a long-term assessment of juvenile salmon populations. Together, the MSA and DFO electrofished an additional 48 sites.

The findings from these sites continue to highlight the significant impact of the MSA's stocking program. Some new sites were identified, and previously stocked sites showed an increased number of fry.



Seth Nowlan, Biologist Lyndsay Jay-Keating, and Joneil Evans conducting juvenile assessments by electrofishing.

Spawning Obstruction Management

The migration of adult Atlantic salmon upstream for spawning can be obstructed by the presence of beaver dams, limiting their access to crucial habitat in the upper parts of streams. By enhancing the accessibility of the upper stream habitat, the survival of salmon eggs can be positively impacted.

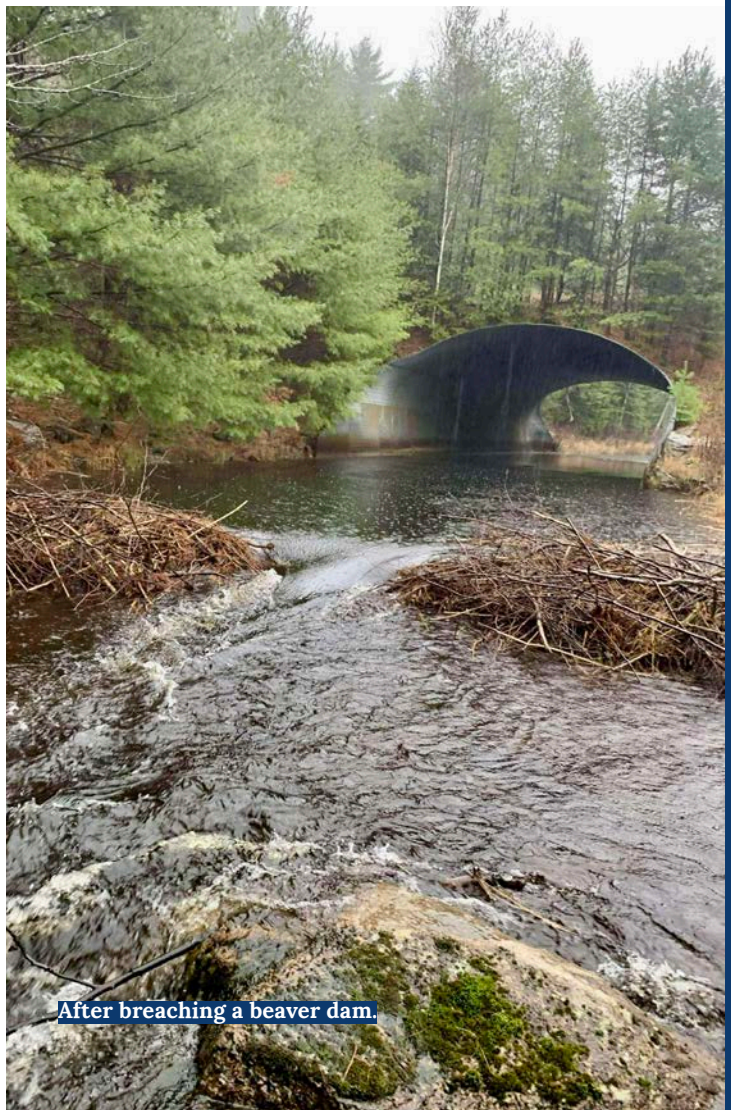
Since beavers can repair active dams within 24 hours, breaching of dams is strategically planned to coincide with the upstream salmon migration. In the Miramichi area, the MSA team successfully notched 51 dams.



Spawning Obstruction Specialist Joneil Evans breaching a beaver dam.



Before breaching a beaver dam.



After breaching a beaver dam.

2025 Dam Management

Location	Dams Breached
Bartibog River	6
Betts Mills Brook	10
Big Hole Brook	11
Juniper Brook	1
North Branch Renous River	2
Otter Brook	6
Sabbies River	2
Salmon Brook	2
Six Mile Brook	2
South Branch Renous River	1
Teague Brook	5
Tomogonops River	3

HATCHERY OPERATIONS

Day-to-Day Operations

The Miramichi Fish Hatchery at the Miramichi Salmon Conservation Centre has five fishing-rearing structures and multiple storage facilities. The Centre is also home to the MSA's head office, an apartment for students and researchers, and a section leased by the Department of Fisheries and Oceans Conservation and Protection Detachment.

Daily responsibilities include tending to the salmon, which includes feeding, observing their behaviour, monitoring water quality, administering anti-fungal treatments, extensive cleaning, maintenance tasks, and data collection.

Throughout the year, we have various life stages of Atlantic salmon at the facility, each requiring specialized care. The hatchery is staffed seven days a week, all year round, with someone available 24/7 for emergencies after hours. In extreme weather conditions, we have two large industrial generators and two small portable generators to ensure a continuous supply of water and oxygen for the fish. There are multiple alarms to monitor oxygen and water levels, enabling the immediate response of staff to any issues, regardless of the time of day.



Egg Care Technicians, Joneil Evans and Jesse Corcoran, performing egg care maintenance.



MSA summer students: Maggie Clark, Lauren Comeau, Cole Johnson, Payton Schenkels, Ally Taylor, and Jack Riley. Missing from photo: Hunter Banks.

Research Projects

The MSCC is a central location for scientists to conduct vital research on Atlantic salmon and other species within the Miramichi River.

In the summer of 2025, researchers from DFO parked their mobile lab trailer at the MSCC for 5 weeks to conduct respirometry studies on striped bass.

Our on-site apartment also housed students and researchers from UNB/CRI and ASF throughout the year, as they conducted important work on the Miramichi River.

The hatchery continued to support the novel Dungarvon fry stocking initiative by collecting and nurturing smolts until they reached adulthood, spawning the adults, and then releasing the resulting fry back into the Dungarvon River. This is a five-year project and will continue until 2028. Dr. Tommi Linnansaari from the University of New Brunswick leads this project.



Hatchery Manager Holly Labadie gives a tour of the Miramichi Salmon Conservation Centre.

Hatchery Tours

The Miramichi Fish Hatchery opens six times a week throughout July and August for public tours of the facility. With our exceptional team of summer students as guides, we are thrilled to share the facility's extensive history and significant work with all our visitors.



Atlantic salmon in a temporary holding tank during spawning.



Senior Hatchery Tech Dylan Hyland and Hatchery Manager Holly Labadie transferring fry.

RIVER MANAGEMENT

Warm Water Protocol

In 2025, the application of the Warm Water Protocol again underscored the growing influence of climate-related stressors on the Miramichi watershed.

MSA continued its participation in DFO-led discussions on the management of cold-water refuges, with a focus on improving how closures and reopenings are implemented on the river.

Prolonged periods of warm temperatures and low flows once again resulted in sections of the river being closed during the peak of the summer season, placing continued strain on anglers, outfitters, and local communities. These recurring conditions reinforce the need to move beyond broad, river-wide measures.

MSA continues to press for improved temperature monitoring and data transparency, including the expansion of temperature logger coverage throughout the watershed, to support more precise and adaptive management decisions.

Recreational Fisheries

MSA attended the Eastern New Brunswick Coastal and Inland Recreational Fisheries Advisory Committee again in 2025, using this forum to advocate for consistent, science-based recommendations for the management of recreational fisheries.

Discussions this year reflected many of the same unresolved challenges facing Atlantic salmon management in New Brunswick. MSA continued to advocate for a robust stocking plan for the Miramichi, management decisions grounded in ecosystem-level science, and a shared decision making process for Atlantic salmon as outlined in the Plamu First report.

The Association also emphasized the conservation value of the recreational fishery itself—highlighting its low biological impact, its role in sustaining conservation funding and public engagement, and the presence of anglers as an important deterrent to illegal activity on the river.

Concerns regarding striped bass remain unresolved. Their continued expansion is increasingly affecting Atlantic salmon and other forage species, including gaspereau, smelt, herring, and mackerel. MSA continues to call for a more balanced and adaptive approach that acknowledges these ecosystem interactions.

Wild Atlantic Salmon Conservation Strategy

In 2025, progress on *Restore, Maintain, Thrive: Canada's national strategy to ensure the future of Wild Atlantic salmon (2024-2036)* remained limited.

Although the strategy provides a necessary national framework for recovery, its effectiveness continues to be constrained by delays in implementation and the absence of dedicated, long-term funding.

MSA remains concerned that continued postponement risks diminishing the strategy's impact at a critical time for wild Atlantic salmon. Meaningful recovery will require sustained investment, clear timelines, and stronger alignment between policy commitments and on-the-ground conservation action.

MSA will continue to advocate for practical, adequately resourced measures that deliver tangible benefits to salmon populations and the rivers that support them.



Helicopter view over the Cains River.

EDUCATION

Jack T.H. Fenety Scholarship

Awarded annually to a graduate student conducting meaningful research about wild Atlantic salmon that is relevant to the Miramichi watershed.

The 2025 recipient was Kristin Armstrong, a master's student at the University of New Brunswick. Kristin's project investigates Atlantic salmon survival as it pertains to egg quality. She will be conducting a series of elemental analyses on Atlantic salmon egg samples from captive programs and wild sources alike, to determine if/how captive rearing affects egg quality, relative to their wild counterparts. This will allow for adaptive management decisions to improve egg quality and optimize juvenile survival.

Brian D. Moore Legacy Fund

The Brian Moore Legacy Fund was established to honour and recognize Brian Moore, past MSA Chair and long-time MSA Director, and to inspire the Miramichi's next generation of conservationists. Thanks to the generous support of our donors who

established this fund, many from Saint John— it provides annual financial support for a student research project.

In 2025, with a reduction in funding typically provided through the Canada Summer Jobs program, the Brian Moore Legacy Fund was especially important in helping sustain MSA's "boots-on-the-ground" conservation programs. We are deeply grateful to our donors for making this support possible and look forward to seeing the fund applied for by a student in the coming year, continuing Brian Moore's legacy of commitment to Atlantic salmon conservation.

First Cast

The 13th Annual First Cast, coordinated by MSA Director Paul Valeri, was held over the weekend of June 28th and 29th. This two-day educational program teaches children and adults the joys of fly fishing. The first day included classroom instruction hosted at the Atlantic Salmon Museum, followed by a day of fishing in Blackville. 2025 saw numerous participants and we would like to thank all the volunteers who made this year's First Cast fun and enriching.



First Cast participants and volunteers.



Art and Writing Contest

For over half a century, the MSA has focused on engaging the future generation of conservationists through school art and writing programs that promote conservation and advocacy.

The MSA would like to thank all schools that participated in our 2025 Bruno Bobak Memorial Art Contest and our writing and printing contests. Grade four student Jeslin from Max Aitken Academy was selected as the overall winner and awarded a framed Kim Stubbs art print.

Student Outreach

To educate the next generation of conservationists, MSA's knowledgeable staff collaborate with schools across the province, facilitating environmental science and river conservation education.

In May and early June, the Miramichi Salmon Conservation Centre opened its doors to elementary and middle school students for the Fish Friends program, offering tours of the hatchery.

Our student outreach initiatives from 2025 included MSA staff judging the STEM Fest and the Spawning Obstruction Management team assisting NBCC students with the breaching of beaver dams as part of their environmental technology program.

MSA Wild Salmon Grant

Launched in 2023 and generously funded by J.W. Bud Bird through an endowment with the MSA, this grant provides \$5,000 annually to an Indigenous undergraduate student at St. Thomas University. This grant supports academic or creative projects that increase public awareness of the Miramichi River watershed, the conservation of wild Atlantic salmon, and the value of Indigenous knowledge in protecting natural spaces.

In 2025, this grant was awarded to Sarah Somerville, whose project produced a comprehensive literature review exploring Atlantic salmon, colonial stewardship, and Indigenous knowledge. Sarah's work highlighted the long history of Atlantic salmon management in New Brunswick and examined the often-intense debates among policymakers, scientists, and Indigenous communities.

Her research underscored the tensions between Western scientific conservation approaches, historical colonial policies, and Indigenous knowledge systems, emphasizing the importance of integrating diverse perspectives in efforts to conserve the Miramichi River ecosystem.

COMMUNICATIONS

The Leaper

The MSA's monthly newsletter is a vital communication tool, providing information to keep readers informed about the MSA's activities and goals. Each edition includes a monthly update from the MSA President, offering insights into current priorities, challenges, and successes.

The newsletter highlights conservation initiatives, detailing efforts to protect and restore wild Atlantic salmon populations and their habitats. It features information about upcoming events, fundraising activities, educational programs, notices about river conditions, and fish stock reports.

Calendar

Our 2026 MSA calendar was circulated to over 700 members and supporters as part of our end-of-season campaign. This year's calendar featured a collection of paintings by the late John Swan. His paintings capture the beauty of the Miramichi River, local camps, and guides.

MSA 2026 calendar featuring paintings from the late John Swan.



**Brian Smith Memorial Photo Contest
1st Place Winner, Ashley Hallihan.**

Miramichi River Stories

A video series led by MSA Director Greg Sprague and committee member Dawson Hovey celebrating the heritage, culture, and traditions of the Miramichi River community. It features guides, anglers, and MSA supporters sharing their personal stories and connections to the river. These videos are posted on YouTube and Facebook and have gained a lot of traction.

Brian Smith Memorial Photo Contest

The photo contest offers amateur photographers a chance to showcase their finest images of the Miramichi River, its people, and its environment. This annual contest runs from April 15th to October 15th, with categories including Miramichi People, Angling, Miramichi Scenes, and Kids.

We are pleased to announce the 2025 winners: Ashley Hallihan (1st Place), Alex Richard (2nd Place), Stephen Pond (3rd Place), and Paul Baker (4th Place). Congratulations to our winners, and a special thank you to Bates Custom Laminating and Framing for generously sponsoring this year's prize packages.

EVENTS

In 2025, the Miramichi Salmon Association advanced its mission to protect and conserve wild Atlantic salmon through a successful year of community engagement, fundraising events, and collaborative conservation initiatives. The year was marked by exceptional support from members, donors, partners, and volunteers, whose ongoing commitment made each achievement possible.

MSA's event calendar began with the MSA US Winter Event, a hybrid gathering that united supporters from both sides of the border and featured auctions and fundraising activities that generated critical resources for conservation work. Community-building events continued with the MSA & Outfitters Curling Bonspiel, designed to raise conservation awareness and attract new members. The organization also engaged extensively with the angling public at the Moncton Boat and Sportsmen Show, strengthening partnerships across the conservation community.

A major annual highlight, the IceBreaker Dinner & Auction, returned with strong participation honouring the Wilson Family, and delivered a successful evening of fundraising, volunteer leadership, and community celebration. Additional fundraising success came through the Spring into the Season Online Auction, which drew strong donor and bidder engagement while reinforcing support for MSA programs.

The year also featured recognition of exceptional conservation leadership. The Bud Bird Award, the Association's highest honour, was presented to Manley Price for his outstanding lifetime contributions to Atlantic salmon conservation.



Attendees of the MSA US Winter Event at the Portland Country Club.



J.W. Bud Bird, Manley Price, MSA Chair Richard McGuigan, and MSA President William (Butch) Dalton at the Bud Bird Award ceremony.

MSA's fall events were equally impactful. The Fredericton Dinner & Auction welcomed almost 300 supporters and honoured long-time contributors Norm Betts and Laura Gilks. The City of Fredericton also recognized the importance of salmon conservation through the proclamation of Atlantic Salmon Conservation Day, delivered in partnership with UNB and the New Brunswick Salmon Council. Later in the season, the Saint John Autumn Dinner & Auction celebrated the contributions of Kevin Harris and generated support through auctions and community engagement which was well attended.



Fredericton Dinner Honourees Norm Betts and Laura Gilks with MSA President William (Butch) Dalton and MSA Chair Richard McGuigan.

The year concluded with the Carleton County Christmas Online Auction, an increasingly popular annual fundraising tradition supported by local sponsors and community donors.

Collectively, these events and initiatives reflect a year of strong momentum for the Miramichi Salmon Association. The dedication of supporters across New Brunswick, the U.S., and beyond ensures that the organization can continue advancing its vital conservation mission and protecting wild Atlantic salmon for generations to come.

CAMPAIGNS

End of Season Ask

The MSA successfully launched this annual campaign in December. As part of this initiative, all current MSA members received an update letter from MSA President William (Butch) Dalton and a complimentary 2026 MSA Calendar. The campaign aims to raise funds by inviting supporters to make year-end donations. The donations are integral to ongoing conservation efforts on the Miramichi River in 2026 and beyond. Sincere thanks to all donors for their continued support.

Planned Giving

At the MSA, we are committed to preserving the future of Atlantic salmon and the ecosystems that support them. The work we do today is not just for the present—it is for future generations. Our Planned Giving program provides a meaningful way for supporters to ensure their legacy and passion for salmon conservation endure long into the future. By including the MSA in their financial or estate planning, individuals become a key part of the MSA Trust, helping to secure the long-term sustainability of our critical conservation work.

FINANCIAL UPDATE

MSA Canada

The MSA achieved excellent fundraising results again this year, generating \$283,533 from events and contributions. The organization secured \$182,260 in various grants that support student salaries and conservation initiatives, including smolt population estimates, fry stocking, cold water pool maintenance, beaver dam notching, and juvenile population assessments. From this total, the Canada Nature Fund for Aquatic Species at Risk provided \$70,000 to conduct cold water pool restorations on the Miramichi River.

Miramichi Fisheries Management, the organization managing the hatchery, has an annual shortfall. Nonetheless, the MSA understands this facility's significance as a conservation tool and persistently looks for ways to raise funds to support its operations.

2025 Consolidated Revenue

Membership	\$7,950
Fundraising/Donations	\$283,533
Government Grants, etc.	\$112,260
Hatchery Programs	\$19,563
Barrier Contract	\$230,000
Canada Nature Fund	\$70,000
Rental Income	\$50,832
Director's Revenue	\$6,077
MSA US Transfers	\$127,688
Investment Transfers	\$74,949

2025 MSA Endowment Gifts

Brian D. Moore Campaign	\$1,000
Donations	\$1,500
Life Memberships	\$2,500

The MSA financial statements were not audited before this publication. Allen, Paquet & Arseneau, LLP, will complete the 2025 audit in accordance with Canadian accounting standards.

Investments

The MSA works with Mais Reynolds Financial Group to oversee our Canadian investments. Mais Reynolds and the broader CIBC Private Wealth Group balance our necessity for revenue generation with our commitment to environmental protection, climate change mitigation, and social justice.

The MSA acknowledges past capital contributions from Bud and Peggy Bird, Bruno Bobak, Samuel E. Burgess, Rex Freeze, Jacqueline Girouard, Kevin Harris, J.D. Irving, the John E. Irving family, the Kaley family, the Laurie Savage family, Denis and Cecile Losier, Doug and Gloria MacDonald, Ernie and Susanne McFadzen, Frank and Julie McKenna, the McQuaid family, Hon. Michael E. Meighen, the Norton family of Upper Oxbow, Punchy Walker, David and Elizabeth Wilson Family Foundation, Scotiabank, and TD Bank Community Relations.

MSA US

The MSA US made a substantial impact in 2025 by facilitating the annual transfer to the MSA for \$112,803, which goes towards our conservation programs and general operations. In addition, the MSA US provided \$14,885 in funding for genetic analysis of eggs, further supporting our research efforts.

The MSA US financials are independent of the Miramichi Salmon Association, and their 2025 financial statements will be prepared and audited by Gary Plante, CPA.

STAFF

Office Staff

William (Butch) Dalton, President
Lyndsay Jay-Keating, Biologist
Tehillah Porter, Admin & Member Relations Coordinator
Jeff Russell, Program & Development Coordinator
Alice Tran, Finance Coordinator
Gaby Giasson, Past Finance Coordinator

Hatchery Staff

Holly Labadie, Hatchery Manager
Dylan Hyland, Senior Hatchery Technician
Gilles Chiasson, Maintenance Specialist
Jesse Corcoran, Egg Care/Spawning Technician
Joneil Evans, Egg Care Technician

Conservation Staff

Brody Hallihan, Conservation Technician
Cole Johnson, Conservation Technician
Joneil Evans, Spawning Obstruction Specialist
Seth Nowlan, Spawning Obstruction Specialist

Summer Students

Ally Taylor, University of New Brunswick
Cole Johnson, Mount Allison University
Hunter Banks, New Brunswick Community College
Jack Riley, Dalhousie University
Lauren Comeau, University of New Brunswick
Maggie Clark, University of New Brunswick
Payton Schenkels, Dalhousie University

Barrier Staff

Edward Stewart, Foreman
Bradley Smith, Dungarvon
Christopher Munn, Dungarvon
Darrell Cain, Northwest
David Woods, Northwest
Joseph Fowler, Dungarvon
Paul Norrad, Dungarvon
Ronald Jagoe, Northwest
Terry Flanagan, Northwest

EXECUTIVE

MSA Officers

William (Butch) Dalton, President
Richard McGuigan, Chair
Gordon Mouland, Vice Chair
Bradford Burns, Vice Chair (US)
Joe Palmer, Past Chair
Rick Pryde, Secretary-Treasurer
Hugh Cameron, Legal Counsel

MSA US Officers

Bradford Burns, President
David Fenderson, Vice President
Gary Plante, Treasurer
Nathaniel Huckle-Bauer, Legal Counsel

MSA Committee Chairs

Dan Cain, Advocacy
Gordon Mouland, Land-use
Kevin Harris, Strategic Planning
Laura Gilks, Education
Manley Price, Conservation Planning
Richard McGuigan, Human Resources
Rick Pryde, Finance
Stan Knowles, Membership
Stephen Toning, Nominations

BOARD OF DIRECTORS

MSA Directors

Alexis Miles
Allan Wilson
Allen Curry
Andrew Willett
Bradford Burns
Brent Locke
Brock Curtis
Chandler Dumaine
Chris Celeste
Chris Smith
Colin (Rip) Cunningham
Dan Cain
David Fenderson
Debbie Norton
Ethan Augustine
Everett Taylor
Gary Tanner
Gordon Mouland
Grant Brenan
Grant Ross
Greg Mulholland
Greg Sprague
Hugh Cameron
Ian Cavanagh
James Blackwell
Janice Cormier
Jeff Morris
Joe Cairns
Joe Palmer
John Fitzpatrick

Joseph Augustine
Joseph Walsh
Kenneth Kyle
Kevin Harris
L. Graeme MacKinnon
Laura Gilks
Manley Price
Marc Cabot
Mark Delaney
Mark Hambrook
Mark Holleran
Martyn Vickers
Matt Alexander
Mike O'Blenis
Muriel MacKenzie
Paul Baker
Paul Valeri
Reece Cain
Richard McGuigan
Rick Cunjak
Rick Pryde
Robert Knowles
Stan Knowles
Stephen Chase
Stephen Toning
Tristan Hovey
Tyler Coughlan
Vincent Swazey
Wayne O'Donnell
William Utley

MSA US Directors

Albert Putnam
Alexis Miles
Allen Magrini
Bob Bonczek
Bradford Burns
Chandler Dumaine
Colin (Rip) Cunningham
David Fenderson
David Huntress
Gary Plante
Gary Tanner
Guido Mosca
James Blackwell
John Vickery
Joseph Walsh
Kevin Harris
Maggie Prorok
Marc Cabot
Martyn Vickers
Nate Huckle-Bauer
Patrick Boland
Paul Valeri
Ralph Vitale
Richard Abbondanza
Richard McGuigan
Roger Earle
Stephen Hibbard
William Utley

Honourary Directors

Alex Mills
Andrew Goode
Byron Coughlan
David Hashey
Gayden Curtis
J.W. Bud Bird
James McQuaid
Keith Wilson
Peter Worth
Stephen Hibbard
Ted Reevey
W. Ross Bingham

Memorial Directors

Brian Moore
Christopher (Kit) Barrow
David Oxley
David Wilson
Doug MacDonald
Hadley Ford
Jim Hughson
John Dillon
John Swan
Peter Howell
Ralph Archibald

LIFE MEMBERS

Life

A. Scott Fraser
 Adrienne Thornton
 Alan Graham
 Albert Putnam III
 Albert Vogt Jr.
 Aldea Landry
 Alex Bobak
 Alex Mills
 Alexander Hindmarsh
 Alexander Steeves
 Allan Wilson
 Allen Magrini
 Allen Moore Jr.
 Allison McCain
 Andrea Northrup
 Andrew Clarke
 Andrew Goode
 Andrew Harrington
 Andrew McCain
 Andrew Page
 Andrew St. Pierre
 Angela McQuaid Murphy
 Ann Wroblewski
 Anne Barrow
 Anne MacBeath
 Anne MacLennan
 Anne Oxley
 Annette Powers
 Anthony Boynton
 Arne Youngberg
 Arnold Alward
 Arthur Lee-White
 Arunas Pleckaitis
 Axel Lerche
 Barbara Hambrook
 Barry Kyle
 Bart Miller
 Beaver Brokerage Inc.
 Ben Kaley
 Ben Pryde
 Benjamin Thornton
 Betty Fitzpatrick
 Betty Ward
 Beverly Dillon
 Bill Barrett
 Bill Dreyer
 Bill Gould
 Bill Hennessey
 Bill Powers
 Bill Westaway
 Bobby Norton
 Brad Toole
 Bradford Burns
 Brian Cunningham
 Brian Fitzpatrick
 Brian Fox
 Brian Green
 Brian Johnson
 Brian Ritchie
 Brian Snow
 Brian Thompson
 Brock Curtis
 Bruce Bauman
 Bruce Bezanson
 Bruce Elliot
 Bruce MacDonald
 Bruce Sinclair
 Bryan Burgess
 Byron Coughlan
 C. Allan McGeathay
 C.D. Bruce
 C.H. Anthony Little
 Cameron MacDonald
 Carleton Ealy
 Carol Houser
 Caroline St. Pierre Taylor
 Carolyn Arnold
 Carroll Denham
 Catharine Barrow McGauley
 Catherine Sherer
 Cecile Mallais-Losier
 Cellvyn Harris
 Chandler Dumaine
 Chantal Arsenaault
 Charles Cartmill
 Charles Grine
 Charles Harriman
 Charles LeBlanc
 Charles Munn
 Charles Ward III
 Charles Wiesner
 Charles Wood III
 Charles Zoulias
 Chris Celeste
 Chris Jensen
 Chris Smith
 Christian Michaud
 Christina Molt
 Christopher Arnold
 Christopher Lloyd
 Churchill Rood
 Ciaran and Hilary Baker
 Clarke Payne
 Clay Davis
 Clearwater Fishing Club
 Clifford McAvity
 Colin Cunningham Jr.
 Colin Cunningham III
 Dale Knox
 Dale Mallais
 Dale Norton
 Dale Thibodeau
 Dale Weldon
 Damon Black
 Dan Cain
 Dan Morrison
 Daniel Bullock
 Daniel Pettit
 Daniel Porter
 Daphne Hallowell
 Darin Lenihan
 Darrell Harris
 Darren Sutherland
 Daryll Stothart
 Dave Coady
 David Alward
 David Balmain
 David Bewick
 David Cole
 David Cox
 David Creighton
 David Crosby
 David Duncan Young
 David Hashey
 David Hawkins
 David Hay
 David Hildebrand
 David Innes
 David Mann
 David Matchett
 David Riley
 David Sawler
 David Stevenson
 David Wade
 David Wilson
 Debbie Norton
 Deborah Power
 Dede Bullock
 Denis Losier
 Dennis Hepburn
 Dennis Oland
 Derek Burchill
 Derek Oland
 Devin Matchett
 Dick Daigle
 Don Wilson
 Donald Burry
 Donald Calder
 Donald Doucet
 Donald Forte Jr.
 Donald MacNeill
 Donald Walker
 Doug Urquhart
 Douglas Crane
 Douglas Morehouse
 Douglas Walmsley
 Douglas Woollings
 Duncan MacKinlay
 E.B. Bert Berkley
 E. Fraser Sherrard
 Earl Brewer
 Ed Barrett
 Ed Morrison
 Ed Rotticci
 Eddie Cantillon
 Edward McNally
 Edward Travis
 Edwin DeVilbiss
 Elaine Colter
 Elizabeth Irving
 Elizabeth McGraw
 Elizabeth Wilson
 Ellen Bishop
 Emily Newell
 Eric Hicks
 Eric Hildebrand
 Eric Roberts
 Erick Anderson
 Ernie McFadzen
 Errol Amos
 Everett Taylor
 Faith Matchett
 Fernand Girouard
 Francesco Princiotta
 Francois Emond
 Frank & Julie McKenna
 Frank Harrington III
 Frederick Pape Jr.
 G Dale Fox
 Gail Gould
 Garfield Hargrove
 Gary Anderson
 Gary Bruce
 Gary Foster
 Gary H. Stairs
 Gary Spicer
 Gary Tanner
 Gayden Curtis
 George Colter
 George Mumford IV
 George Peppin
 George Watson
 Georges Family Foundation
 Gianfranco Chiang
 Glen Davis
 Glen Umlah
 Glendon Abbott
 Glenn Beaumont
 Gordon Mouland
 Graham Starratt
 Grant Parr
 Grant Ross
 Greg Hartz
 Greg Munn
 Greg Sprague
 Gregg Gorham
 Gregory Petrini
 Gregory Thornton
 Guy French
 Hadley Ford
 Hans Klohn
 Hans Olsen
 Harris Parsons
 Harry Foreman
 Harry Groome III
 Harry McSheffery
 Hazel Swazey
 Hoagy Carmichael
 Hollie Matchett
 Howard Ludington
 Howard Rossbach
 Hugh Cameron
 Hugh Flemming
 Hunter Hallowell
 Hymie Surkis
 Ian Cavanagh
 Ian Hatheway
 Ian Oliver
 Ian Stead
 Irene McCardle
 Isabelle Loughhead
 J. Carl Graybill Jr.
 J. Charles Caty
 J. David O'Keefe
 J. David Wimberly
 J.S. Fiske
 J.W. Bud Bird
 Jack Brennan
 Jack Northrup
 Jacqueline Girouard
 Jacqueline Oland
 Jacques Dubé
 Jacques Fiechter
 Jacques Pinet
 Jake Allen
 James (Doug) Charters
 James Anderson
 James Blackwell Jr.
 James Fargher
 James Henderson

James Hoffman	K. Gail MacKinnon	Michael Herman	Robert McQuaid
James Irving	Kalevi Kotkas	Michael Hughson	Robert Mosher
James Izzard	Karen Brennan	Michael McCormick	Robert Pinette
James Kelly	Karla Gaffney	Michael Meighen	Robert Reid
James Ladd	Katherine Ellard	Michael Webb	Robert Richardson
James Lawley	Kathleen Coull	Mike Bishop	Robert Robb
James McQuaid	Kathleen Rossbach	Mike Flanagan	Robert Roy
James Mumford	Keith Sherrard	Mike O'Blenis	Robert William Adams
James Rossbach	Keith Wilson	Muriel MacKenzie	Robert Wilson
James Steeves	Ken Dean	Murray Coulter	Robin Wilber
James Stewart	Kenneth Kyle	Myrna Green	Rod Doyle
James York	Kenneth Wright	Nancy Dube	Roderick Nolan
Jamie Leblanc	Kensyle Cogswell	Neil DuPlessis	Rodney Ouellette
Janet MacLaren	Kent Orlando	Nicholas Guitard	Roger Coffin
Janice Cormier	Kerry MacQuarrie	Nola Chiasson	Roger Earle
Janice Hashey	Kevin Chapman	Norman Betts	Roger Jenkins
Jason White	Kevin Harris	Norman Fraser	Ron Jenkins
Jean-Paul Bisnaire	Kevin MacDonald	Owen MacNeil	Ron Shannahan
Jeff Keith	Kim Sharpe	Pamela Gerstmayr	Ronald Cox
Jeff Morris	Krista Fenety	Patricia Payne	Ronald Stafford
Jeff Potter	L. Graeme MacKinnon	Patricia Price	Ross Perry
Jeffrey Doyle	L.H. Lockhart	Patrick Cobler	Ryan Wilson
Jeffrey Roy	Larry Davidson	Patrick Gillespie	Salar Haven Fishing Club
Jeffrey Williamson	Larry Hunt	Patrick Jones	Sally Wilson
Jenny Reid	Larry Kinden	Paul Baker	Sam Burgess
Jerome Farnsworth	Larry Phillips	Paul Creaghan	Sandra Doyle
Jerome Molloy	Larry Smith	Paul DeMerchant	Sandra Dunnett
Jerry Doak	Laura Gilks	Paul Goobie	Sandy A.G. MacDonald
Jim Hatheway	Laurence Savage	Paul Taylor	Santiago Arbelaez
Jim Pryde	Laurie Carr	Paul Valeri	Saul Michaud
Jim Truelove	Lee Stairs	Perry Flann	Scott Langin
Jim Walker	Leo Johnson	Peter Canoni	Scott Robidoux
Jim Yerxa	Leslie Hull	Peter Graham	Serge Dupuis
Jo-Anne Linton	Linden Fenety	Peter Jobe	Shawn Bilterman
Joe Blaze	Linehan Family Foundation Inc.	Peter Kane	Shepard McKenney
Joe Cairns	Lino Celeste	Peter Reid	Sophia Northrup
Joe Palmer	Lisa Haldane	Peter Rodgers	Stan Knowles
John & Sheila Fitzpatrick	Lloyd Webb	Peter Worth	Stephen Coull
John Anderson	Lois Walker	Pierre Nadeau	Stephen Hibbard
John Anderson II	Louis Leger	R. Allan Hughson	Stephen Johnson
John Buck III	Louis Theriault	R. Brian Connell	Stephen Loring
John Castellani	Louise McCleave	R. Bruce Eddy	Stephen McCain
John Cleghorn	Lucillia Wilson	R. Edward Lawrence	Stephen O'Brien
John Cole	Luke Kyle	Ralph Norrad	Stephen Smith
John Douglas Jr.	Lyle (Chip) Sutherland	Ralph Vitale	Stephen Thornton
John Fraser	Mac Fox	Randall Hartlen	Stephen Tinning
John Gerstmayr	Malcolm Dunfield	Randy Seymour	Stephen Wilson
John Hapgood	Manley Price	Ray Davidson	Steven Burns
John Hickman	Marc Cabot	Ray Woodill	Stuart Cragin Jr.
John Hogan	Marcel Caissie	Renate Bullock	Susan Barrow
John Irving	Margaret Blackwell	Rex Garrett	Susan Moore
John Keddy	Marion Barrow	Rich Breuner	Susan Thorp Barrow
John Kileel	Mark Coy	Richard Berlin Jr.	Suzanne Irving
John Lawrence III	Mark Delaney	Richard Carpenter	Suzanne Wonham
John MacFarlane	Mark Hambrook	Richard Eusanio	Tammy Ross
John McNally	Mark Holleran	Richard McGuigan	Ted Reevey
John Mossman	Mark Watson	Richard Miller	Ted Silver
John Price	Marshall Field	Richard Molt Jr.	Ted Wojtech
John Pugh	Marshall Hoffman	Richard Wade	Terrence L.S. Teed
John Thorndike	Martha Bullock	Richard Warren	Terry Wilson
John Tobin	Martyn Vickers	Rick Pryde	Thomas Allen
John Vickery Jr.	Mary Ann Stevens	Robert Albee III	Thomas Doyle
John W.S. McMullen	Matthew Harris	Robert Allain	Thomas Evans
Jon Eggleston	Meg Pryde	Robert Calhoun	Thomas Lekborg
Jonathan Larrabee	Mel McGuigan	Robert Cotiaux	Thomas McGauley
Jonathan Winthrop	Melissa McQuaid	Robert Creamer	Thomas McKay
Jordan Green	Mervin Green	Robert Crosbie	Thomas Stoneback
Joseph Arseneault	Michael Batza Jr.	Robert Haines	Thomas Tierney
Joseph Perella	Michael Bishop	Robert Hinckley	Thomas Vander Salm
Joseph Sherer III	Michael Cherry	Robert Knowles	Thomas Weckman
Joshua Barrett	Michael Cherwek	Robert Lauer	Timothy Foster
Julie Kyle	Michael Connors	Robert MacDonald	Timothy Lyons

Todd Youmans
 Tom MacLaren
 Tom Merrick
 Tom Vardy
 Tony Spares
 Travis Dickinson
 Trish Ash
 Tristan Hovey
 Tyler Coughlan
 Vince Swazey
 Vincent Koehler Jr.
 Virginia Hibbard
 W. Peter Cherry
 W. Ross Bingham
 Wade Humphreys
 Wallace Turnbull
 Walter Buchan
 Warren Cresswell
 Warren Long
 Wayne Fowler
 Wesley Curtis
 Whitehall Investments
 William Apold
 William Baker
 William Barrett
 William Bullock
 William C.D. Fraser
 William Claflin IV
 William Comeau
 William Haldane
 William Henderson
 William Hoel
 William Knobloch
 William McMackin
 William Munger
 William Pounds
 William Stanley
 William Utley Jr.

Pledged Life

David Dorr
 David Huntress
 Edmond Cournoyer
 Elenor Coburn Smith
 Gaby Giasson
 Hugh Hawley
 Jason Woollard
 Jeff Mose
 John Elmo
 Kole Renwick
 Neil Freeman
 Paul Elson
 Robert Ahearn
 Tom Alexander
 Travis Jones
 William Kean Professional Corp

Memorial Life

A. Ross (Punchy) Walker
 Allen Watts
 Anne Harriman
 Arthur Mitton Jr.
 Bill Woodworth
 Bruce Howe
 Bryant Freeman
 Carl & Mildred Weiss
 Carl Andersen
 Charles Ferree
 Charles Norrad
 Charles Wade
 Charles Winslow Pond
 Clarence E.P. (Slip) Crauer

David Colter
 Donald Curry
 Donald Malcolm Neill
 Edward Mitton
 Edward Seward Stevens
 Eldrid D Bailey
 Eric LeDrew
 Freeman Dunnett
 G. Guthrie Conyngham
 George Connely
 George McAvity
 Gerry Cherry
 Harold Gumble
 Henrick Tønning
 Herb Wade
 Howard Brown
 J. Louis Newell Jr.
 J.E. MacKay
 Jack Walsh
 Jacques Page
 James Wilber
 Jeff McGuigan
 Joan Barrett
 John A.G. Page
 John Behan
 John Dillon
 John L. (Jack) McDowell
 John Newell
 John Schultz
 John Stevens
 John Thomas Camicia
 Joseph Cardoza
 Joseph Hallihan
 Joseph Sherer Jr.
 Julian Crocker
 Kingsbury (Crib) Browne Jr.
 Lee Hallowell
 Lesmere Kirkpatrick
 M.D. Stairs
 Max Dean
 Michael Barrett
 Michael R. Sprague
 Murray Calhoun

Otto Burt
 Parker Bancroft (Banty) Reid
 R. Palmer Baker
 Ralph Brenan Jr.
 Reginald Coull
 Richard Brace
 Richard Cochrane
 Richard Rossbach
 Richard Seidel
 Robert DeVilbiss
 Robert Stoddard
 Rolf Hofer
 Tony Valeri
 Victor Mainolfi
 W.L. (Rex) Freeze
 Warren Duncan
 William (Willie) Bacso
 William Belden
 William Gumble
 William M.R. Mapel
 William Patterson
 Wilmot (Will) Kenneth Webb

Corporate Life

Assumption Life
 Black Brook Salmon Club
 CIBC Wood Gundy
 Dean Bar Salmon Club
 Eastern Fence Limited
 Fredericton Outfitters and Anglers Ltd.
 Glencore Canada Corporation
 H.J. Crabbe & Sons Ltd.
 International Paper Foundation
 IP Canada Holdings (Rocky Brook Camp)
 J.D. Irving
 Kingswood Ventures Inc.
 Outfitters and Anglers
 Palmer Atlantic Insurance
 Scotiabank
 Slate Island Wilderness Lodge
 TD Bank
 W.R. MacKinnon (2001) Ltd.



MSA summer student Hunter Banks takes measurements of a fish.

ANNUAL MEMBERS

Sustaining

Andrew Halford
Anthony Dell'Aquila
Art Froese
Bev Bacon
Bill Seretta
Brian Williams
Carl Soderland
Casey Cramton
Charles Thomas
Chris Melvin
Christien Leger
Clare Muttart
Colton Adair
Craig Carlin
Craig Woodard
Dan Farren
David Cronje
David Foster
Donald Monteith
Doug Schlink
Douglas Grout
Duncan MacDonald
Fins & Feathers Outfitting Ltd.
Fred Solven
Frederick Lane
Frederick McElman
Freeman Walsh
George Hendry
Grant Hendry
Greg Mulholland
Guido Mosca
Henry Leeming Jr.
James Banks
James Caccivio
James Morell
Jay Stemler
John Bagnall
John Flewelling
John Marsh
John McCarthy
Karen Stilwell
Kevin Bonner
Leslie Palmer
Merlin Palmer
Michael Greer
Michael Sullivan
Mike Connell
Patrick Boland
Peter Maher
Randy Arseneau
Ray Zeiner
René Marineau
Richard Abbondanza
Richard Little
Richard Ostrowski
Rick Melanson
Robert Bonczek
Robert Crowley
Roland Dabadie
Ross Sonier
Shelley Ledrew
Stephen Flewelling
Thor Olesen
Tim Ryan
Tyson MacCormack
Wayne Power
William Farren

Regular

Adam McGatey
Alan Gladwin
Albert Putnam IV
Allan Shipp
Andrew Holt
Bruce Gans
Cassie Ross
Charles Bradbury
Chris Avery
D. Brent Corey
Daniel Estabrooks
David Dunn
David Rowe
David Secor
David Sketchley
David Skinner
Dawson Hovey
Donald Henderson
Dwight Perkins
Edward Ancas
Eli Cameron
Frederic O'Donnell
Frederick Boyle
Gladys Connely
Glenn Rudberg
Greg Woodill
Gregory McCormick
Harry Ashbourne
Harry Burkhart
Harvey Wheeler
Henry Putnam
James Graul
James Marriner
Jason Curtis
Jay Sprague
Jeremy Demont
John Cornell
John Hanson
John McMullen Jr.
Jonathan Burt
Joseph Hallihan
Karen Jorgensen
Kenny Mulherin
Kenny Whalen
Kevin Sweezey
Kirby Kramer
Lawrence Gaska
Lenny Pierce
Leo Green
Louis Richard
Luther Hall
Martin Boucher
Michael Connolly
Michael Pratico
Millar Coughlan
Miramichi Headwater Salmon
Federation Inc.
Myles MacCallum
Nicholas McPhee
Nick Whitters
Paul Norrad
Paul Nuccio
Peter Clark
Phyllis Robinson
Ralph Goodwin
Raymond Lacroix
Reginald Woods

Richard Hungaski
Rick Cunjak
Robert Nadeau
Rod Currie
Rylan Mulherin
Sam Johnston
Samuel Cameron
Sandra Hitchcock
Sheldon Anderson
Stephen Rosenfeld
Stephen Schreinert
Stephen Tweedie
Terry Bell
Tim Hicks
Tony Harris
Vincent Colletti
Walton Waller
Wayne Miller
William Doyle

Guide

Claudine Philippe
Elaine Gray
Lyndsay Jay-Keating
Norman Stewart
Omer MacKenzie
Phillip Hallman
Randy MacKenzie
Reggie Coughlan
Wilfred Harding

Club

Big Hole Fishing Camp
Doctor's Island
Footbridge Lodge
Gilman Brook Fishing Camp
Hershey Salmon Club Inc.
Kedgwick Salmon Club
Kenmore Fishing Club (1970) Ltd.
Ledges Inn
Little Forks
Millbrook Fishing Lodge
Miramichi Country Haven
Mountain Channel Salmon Club Inc.
Newfound Outfitting Ltd.
Oriole Angler's Club Inc.
Pond's Resort
Push and Be Damned Camp
Reel - Ax Sports Chalets
Rocky Bend Fishing Club
White Birch Lodge
Wilson's Sporting Camps

Complimentary

Amie Petracek
Gene Bahr
Jon Craig
Kathleen Vickery
Melissa Gauvin
Mitch Levesque
Pauline Avery
Robert Wilms
Will Avery



MSA and barrier staff seining for broodstock at the Dungarvon salmon protection barrier.

CONSERVATION & FUNDING PARTNERS



Canadian Rivers Institute



Fisheries and Oceans Canada
Pêches et Océans Canada



MIRAMICHI WATERSHED MANAGEMENT COMMITTEE



MSA South Esk Office
485 Route 420
South Esk, NB E1V 4L9
(506) 622-4000

MSA Fredericton Office
1133 Regent Street, Suite 110
P.O. Box 30035, Prospect Plaza
Fredericton, NB E3B 0H8

MSA US Office
MSA (US) Inc.
P.O. Box. 10986
Portland, ME 04104

MSA



CONSERVATION

WWW.MIRAMICHISALMON.CA